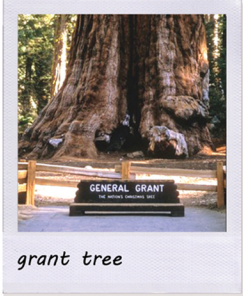
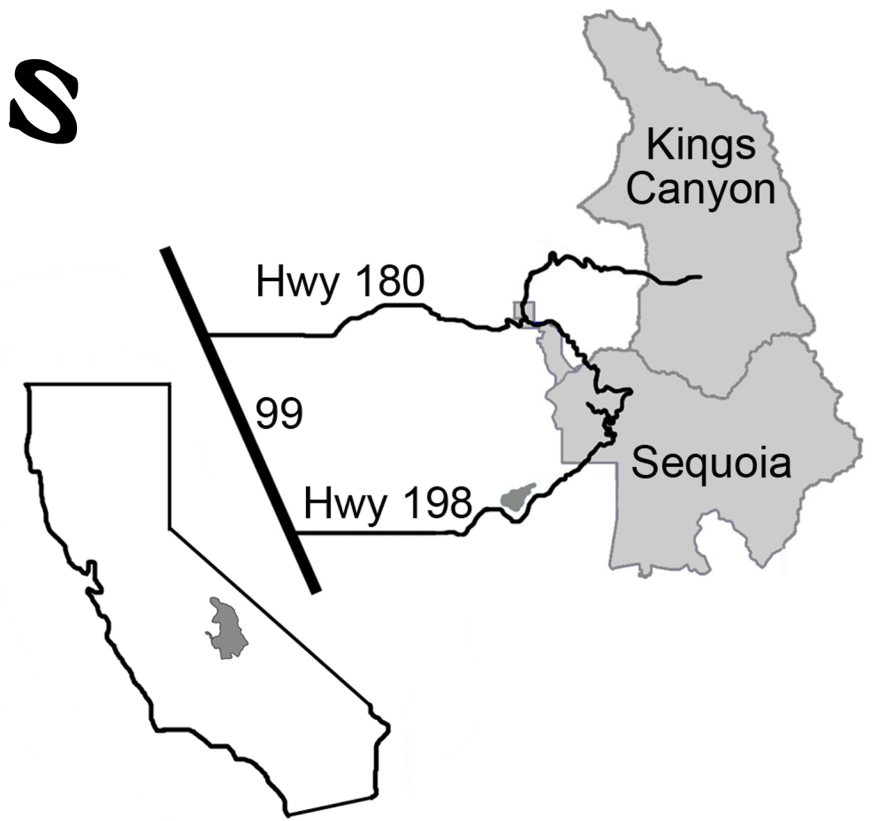
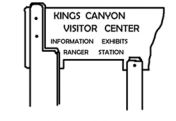


a day in the parks

CALIFORNIA



grant tree
GENERAL GRANT TREE
 This is our nation's Christmas tree and only national living memorial. It is one of the largest sequoias and sits on a beautiful loop trail.



Kings Canyon National Park

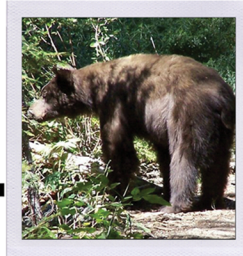
KINGS CANYON VISITOR CENTER
 This visitor center offers amazing bilingual displays and a free, award winning movie for public viewing.

KINGS CANYON OVERLOOK
 Magnificent views of the Kings River valley that John Muir called "a rival to Yosemite". Make a stop, get out of your car and see for yourself.

Hwy 180



REDWOOD CANYON GROVE
 At 4,500 acres, this is the largest grove of sequoias in the world. Tens of thousands of sequoias live in this grove.



PARK WILDLIFE
 While you are visiting, you have the opportunity to see many varieties of animals. Please do not approach or feed any park wildlife.

park wildlife

WUKSACHI LODGE
 The only lodge in Sequoia offers several programs throughout the year including astronomy & living history barbeques.



LODGEPOLE AREA
 Home to a large campground, market, deli and visitor center. A nice stroll can be had on the three mile, riverside trail to Tokopah Falls.

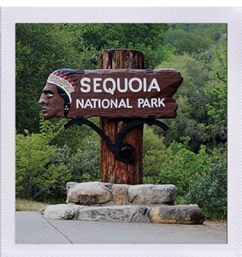


CRYSTAL CAVE
 You must buy tickets at the Foothills or Lodgepole VCs. The tour requires strenuous walking and a light jacket.

spider web gate at crystal cave



HOSPITAL ROCK
 Learn about the American Indians who inhabited the area. Check out some authentic pictographs and get a good view of Moro Rock.



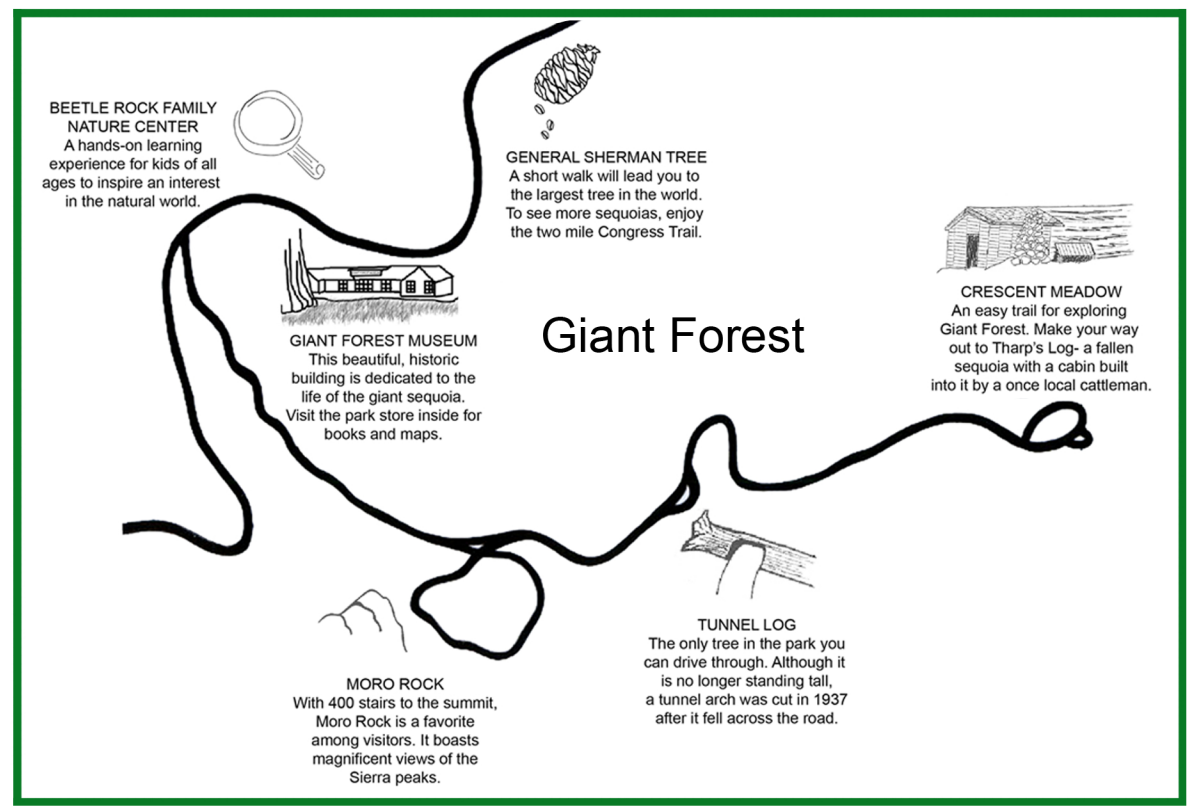
INDIAN HEAD SIGN
 This welcome sign has been in the park since the 1930's. The design was modeled after the face of an Indian head nickel.

sequoia entrance

FOOTHILLS VISITOR CENTER
 Stroll through the native plant garden and buy your tickets for Crystal Cave.

Sequoia National Park

Hwy 198



BETLE ROCK FAMILY NATURE CENTER
 A hands-on learning experience for kids of all ages to inspire an interest in the natural world.

GENERAL SHERMAN TREE
 A short walk will lead you to the largest tree in the world. To see more sequoias, enjoy the two mile Congress Trail.

GIANT FOREST MUSEUM
 This beautiful, historic building is dedicated to the life of the giant sequoia. Visit the park store inside for books and maps.

CRESCENT MEADOW
 An easy trail for exploring Giant Forest. Make your way out to Tharp's Log- a fallen sequoia with a cabin built into it by a once local cattleman.

MORO ROCK
 With 400 stairs to the summit, Moro Rock is a favorite among visitors. It boasts magnificent views of the Sierra peaks.

TUNNEL LOG
 The only tree in the park you can drive through. Although it is no longer standing tall, a tunnel arch was cut in 1937 after it fell across the road.